



Beautiful Steel Buildings



Experience.
Knowledge.
Creativity.
Trust.

WE BUILD IT BETTER



Beautiful. Durable. Affordable.



Garage/Studio



Residential



Garages



Home Office



Workshops & Studios



RV Garages



Farm Buildings



Premium Canopies



Wineries



Commercial - Industrial



City - County - State



Storage

OUR 4-STEP PROCESS

1

FREE ESTIMATE
SITE SURVEY
NO OBLIGATION



2

PLAN DESIGN
PERMIT ASSISTANCE
LOCAL ENGINEERING
GUARANTEES LOCAL
CODE COMPLIANCE



3

PWS COMPLETES
CONSTRUCTION
GRADING
CONCRETE
FRAMING & SHEETING



4

YOUR NEW BUILDING
40-YEAR WARRANTY
MEETS WIND &
EARTHQUAKE CODES
FIRE PROOF & PEST PROOF



ACCESSORIES

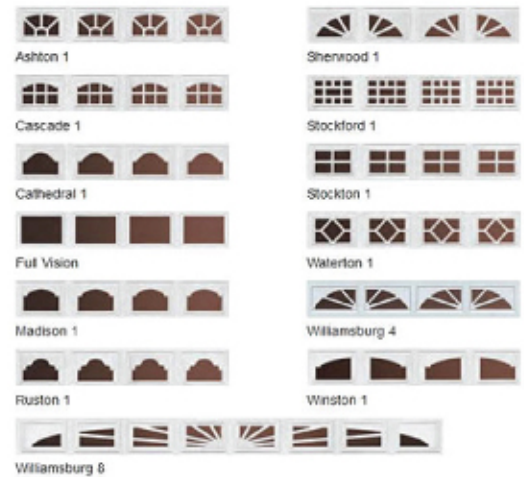
COLORS TRIM | SIDING | ROOF



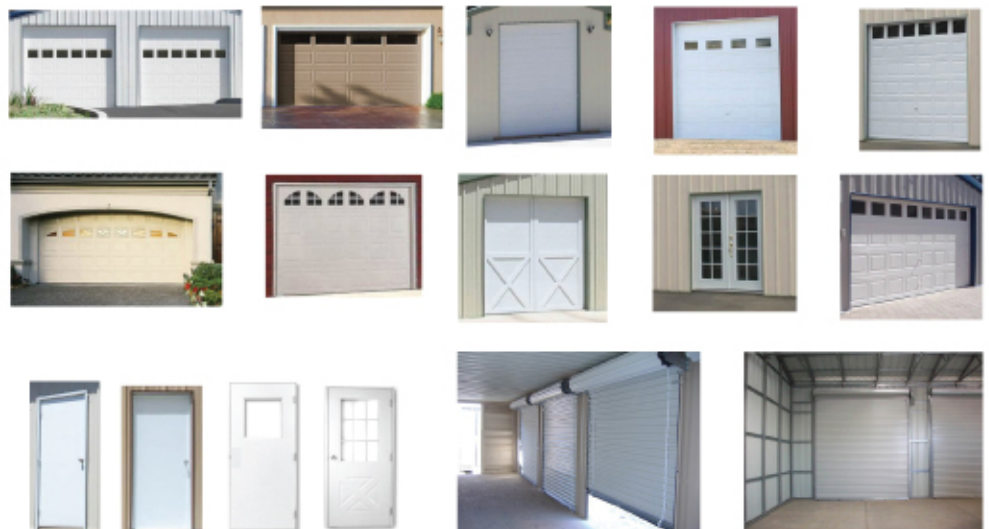
WINDOWS



GARAGE DOOR WINDOWS



GARAGE DOORS | ROLL UP DOORS | STANDARD DOORS



CUPOLAS





Standard Country Style Sizes

MAXIMUM TOTAL WIDTH 70'

WIDTHS - (raised center section) 10' to 40'

WIDTHS - (side bays) 10', 12', 15'

LENGTHS - ANY LENGTH

HEIGHTS - (raised center section) 14.5' to 20'

HEIGHTS - (side bays) - 8.5' to 12'

Standard Steel Building Sizes

For most Garages, Ag Buildings, Workshops,
Carports, RV & Boat Covers

WIDTHS - 10' to 45'

LENGTHS - ANY LENGTH

HEIGHTS - 8.5' and up (in 1' increments)

Larger Sizes Available Upon Request

**Custom sizes to meet your needs are easily built
by adding height, length & width extensions.**



Visit Our Showroom

Hwy 46 & Golden Hills Rd.
Paso Robles, CA 93446

Showroom is open 8 a.m.-5 p.m.

Mon.-Sat. for self-guided visits.

Or call to request an appointment
with a PWS Sales Expert.

Directions:

From Hwy 101, take Hwy 46 East towards Fresno/Bakersfield.
Turn right on Golden Hill Road, turn right on Mesa Road,
then right on Prospect Ave. Continue to the end of the
street, turn right into the parking lot. The display building
is on the left; the showroom is to the right.

If coming in from Hwy 46 East, take a left on Golden Hill
Road and follow the rest of the directions as before.

Let's Talk

Call for Your **FREE**
Site Survey Today.
No Obligation.

CALL

888-547-8797

EMAIL

info@pwssteelbuildings.com

ONLINE

pwssteelbuildings.com



Corporate Offices
San Luis Obispo, CA 93401
Office: (805) 547-8797
Toll-free: (888) 547-8797
Fax: (805) 549-8469
Lic. #850705 / Insured